

Northwest Region Labor Market Status Report -- September 2010

Civilian Labor Force:

change since last... month year

| | | |
|------------------|---|---|
| Northwest Region | ↑ | ↑ |
| Pennsylvania | ↑ | ↓ |
| United States | ↑ | ↑ |

Employed Population:

change since last... month year

| | | |
|------------------|---|---|
| Northwest Region | ↑ | ↑ |
| Pennsylvania | ↑ | ↓ |
| United States | ↑ | ↑ |

Unemployed Population:

change since last... month year

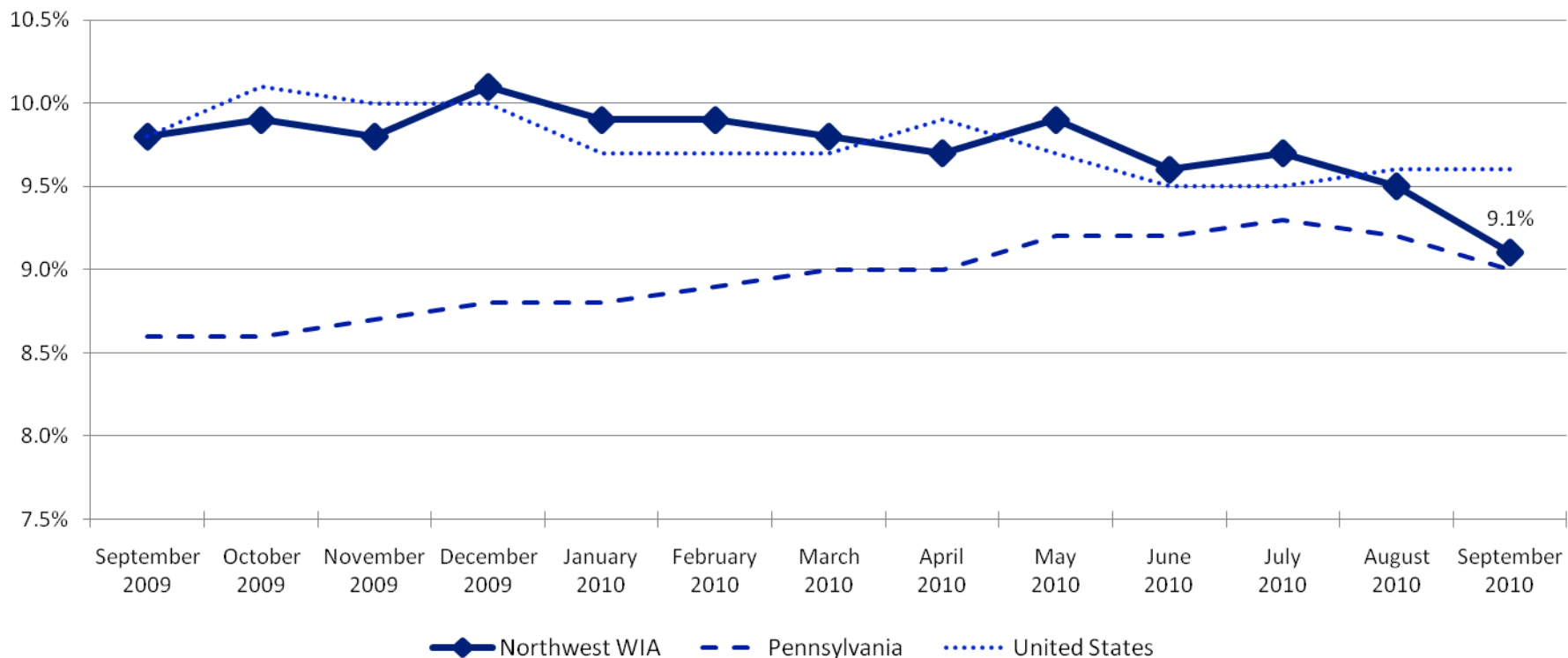
| | | |
|------------------|---|---|
| Northwest Region | ↓ | ↓ |
| Pennsylvania | ↓ | ↑ |
| United States | ↓ | ↓ |

Unemployment Rate:

change since last... month year

| | | |
|------------------|----|---|
| Northwest Region | ↓ | ↓ |
| Pennsylvania | ↓ | ↑ |
| United States | -- | ↓ |

Unemployment Rates

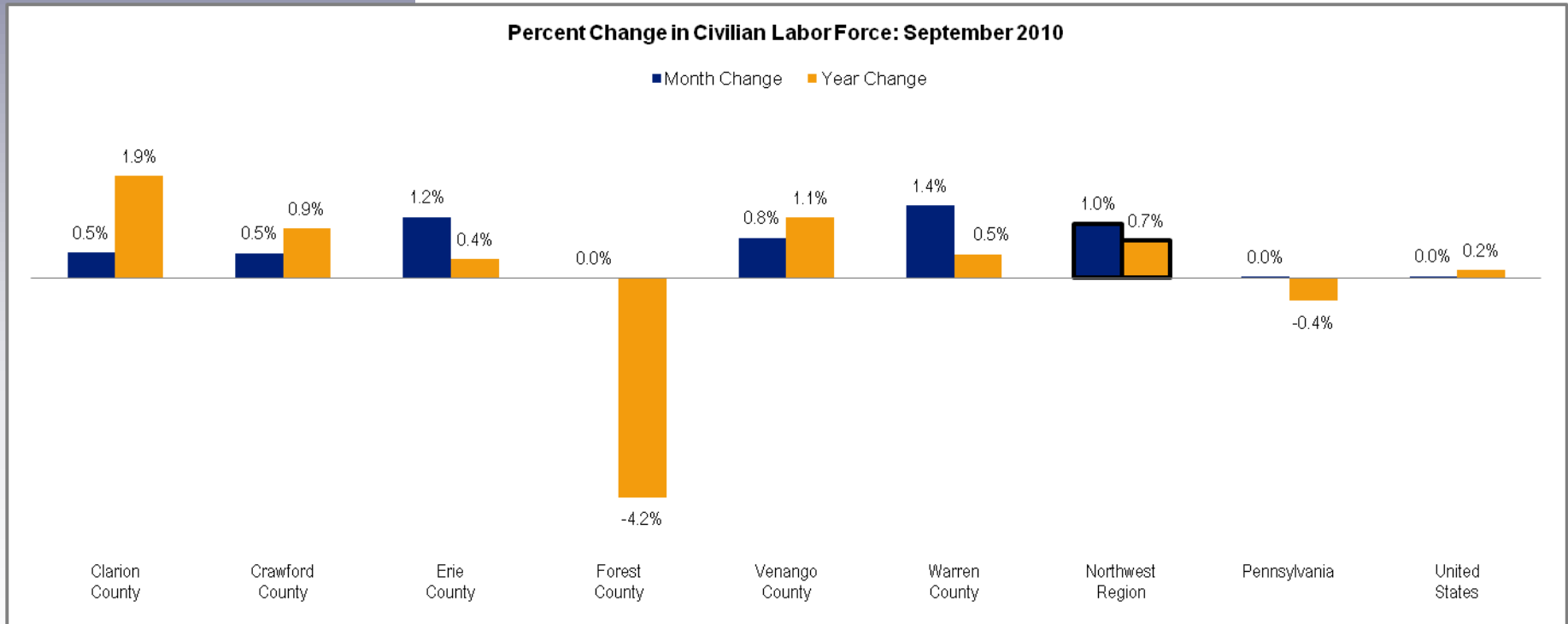


Civilian Labor Force

| | |
|-----------------|---------|
| Clarion County | 21,000 |
| Crawford County | 43,100 |
| Erie County | 140,200 |
| Forest County | 2,300 |
| Venango County | 26,400 |
| Warren County | 22,100 |

The labor force is comprised of individuals who are working, waiting for a layoff to end, or are actively seeking work. The graph below highlights changes in the civilian labor force as a percentage of an area's total civilian labor force.

| | Change Since | | |
|-------------------------|----------------|--------------|----------------|
| | September 2010 | August 2010 | September 2009 |
| Northwest Region | 255,200 | 2,600 | 1,800 |
| Pennsylvania | 6,365,000 | 1,000 | -28,000 |
| United States | 154,158,000 | 48,000 | 231,000 |



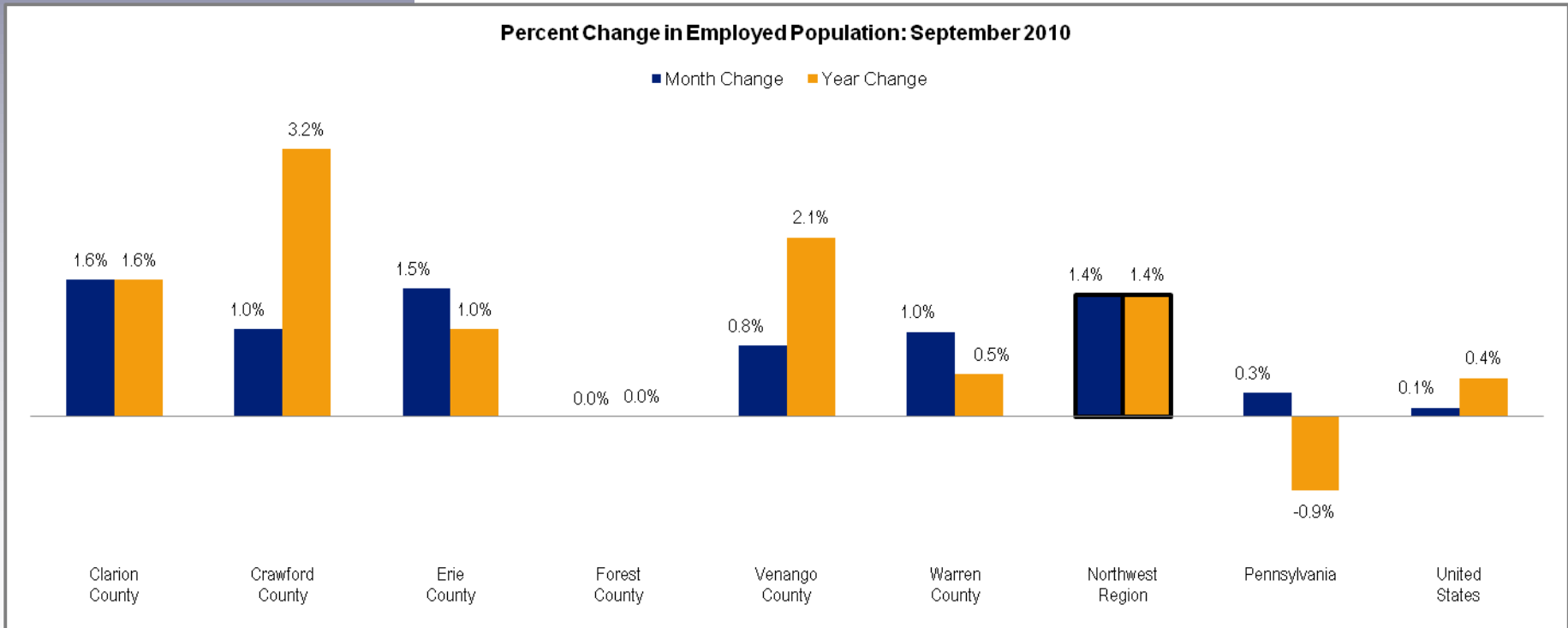
Employed Population

| | |
|-----------------|---------|
| Clarion County | 18,900 |
| Crawford County | 39,100 |
| Erie County | 127,400 |
| Forest County | 2,100 |
| Venango County | 24,100 |
| Warren County | 20,300 |

The employed population includes individuals who are working. The graph below highlights changes in employment as a percentage of an area's total employment.

| | September 2010 | Change Since | |
|-------------------------|----------------|--------------|----------------|
| | | August 2010 | September 2009 |
| Northwest Region | 231,900 | 3,300 | 3,300 |
| Pennsylvania | 5,794,000 | 16,000 | -51,000 |
| United States | 139,391,000 | 141,000 | 623,000 |

Percent Change in Employed Population: September 2010

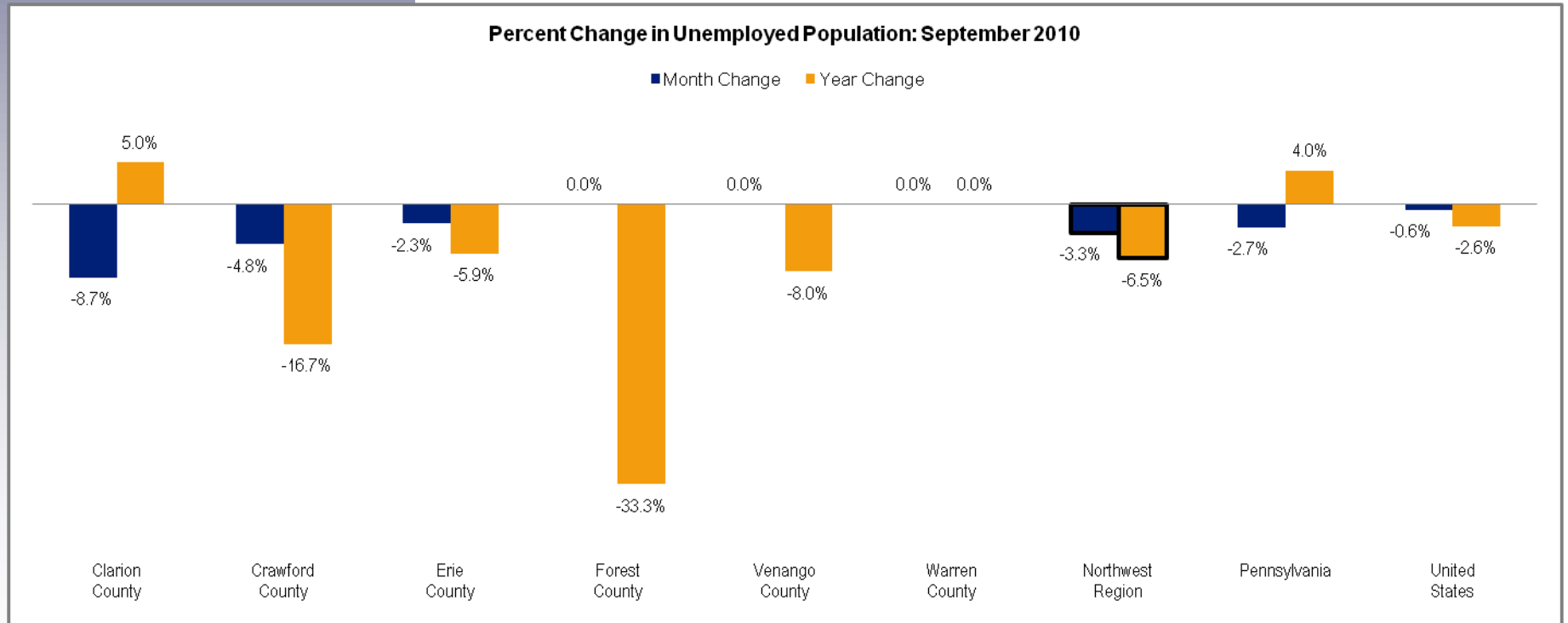


Unemployed Population

| | |
|-----------------|--------|
| Clarion County | 2,100 |
| Crawford County | 4,000 |
| Erie County | 12,800 |
| Forest County | 200 |
| Venango County | 2,300 |
| Warren County | 1,800 |

The unemployed population is made up of individuals who are not working, but are waiting for a layoff to end or are actively seeking work. The graph below highlights changes in unemployment as a percentage of an area's total unemployment.

| | Change Since | | |
|-------------------------|----------------|-------------|----------------|
| | September 2010 | August 2010 | September 2009 |
| Northwest Region | 23,200 | -800 | -1,600 |
| Pennsylvania | 570,000 | -16,000 | 22,000 |
| United States | 14,767,000 | -93,000 | -392,000 |



Unemployment Rates

| | September 2010 | August 2010 | September 2009 |
|-------------------------|----------------|-------------|----------------|
| Clarion County | 10.2% | 10.9% | 9.6% |
| Crawford County | 9.3% | 9.8% | 11.1% |
| Erie County | 9.2% | 9.5% | 9.7% |
| Forest County | 8.9% | 9.0% | 12.1% |
| Venango County | 8.6% | 8.9% | 9.5% |
| Warren County | 8.0% | 8.2% | 8.0% |
| Northwest Region | 9.1% | 9.5% | 9.8% |
| Pennsylvania | 9.0% | 9.2% | 8.6% |
| United States | 9.6% | 9.6% | 9.8% |

The unemployment rate represents the proportion of individuals in the civilian labor force who are not working, but are waiting for a layoff to end or are actively seeking work. The graph below highlights changes in unemployment rates.

